

**BALDOR® • RELIANCE** 

**Product Information Packet**

**GSL3509M**

**1.5HP, 1735RPM, 1PH, 60HZ, 56Z, 3523LC, TEFC, F**

Part Detail							
Revision:	N	Status:	PRD/A	Change #:		Proprietary:	No
Type:	AC	Elec. Spec:	35WGP243	CD Diagram:	CD0370	Mfg Plant:	
Mech. Spec:	35G630	Layout:	35LYG630	Poles:	04	Created Date:	03-29-2006
Base:	RG	Eff. Date:	10-22-2019	Leads:	2#16 A PH,3#18 B&J,2#18 P		

Specs			
Catalog Number:	GSL3509M	KVA Code:	J
Enclosure:	TEFC	Lifting Lugs:	No Lifting Lugs
Frame:	56Z	Locked Bearing Indicator:	No Locked Bearing
Frame Material:	Steel	Motor Lead Quantity/Wire Size:	2 @ 16 AWG, A PH
Output @ Frequency:	1.500 HP @ 60 HZ	Motor Lead Exit:	Ko Box
Synchronous Speed @ Frequency:	1800 RPM @ 60 HZ	Motor Lead Termination:	Flying Leads
Voltage @ Frequency:	208.0 V @ 60 HZ	Motor Type:	3523LC
	230.0 V @ 60 HZ	Mounting Arrangement:	F1
XP Class and Group:	None	Power Factor:	94
XP Division:	Not Applicable	Product Family:	General Purpose
Agency Approvals:	UR	Product Type:	FARM DUTY
	CSA	Pulley End Bearing Type:	Ball
Auxillary Box:	No Auxillary Box	Pulley Face Code:	Standard
Auxillary Box Lead Termination:	None	Pulley Shaft Indicator:	Standard
Base Indicator:	Rigid	Rodent Screen:	None
Bearing Grease Type:	Polyrex EM (-20F +300F)	RoHS Status:	ROHS COMPLIANT
Blower:	None	Shaft Extension Location:	Pulley End
Current @ Voltage:	6.400 A @ 230.0 V	Shaft Ground Indicator:	No Shaft Grounding

	6.900 A @ 208.0 V	<b>Shaft Rotation:</b>	Reversible
<b>Design Code:</b>	L	<b>Shaft Slinger Indicator:</b>	No Slinger
<b>Drip Cover:</b>	No Drip Cover	<b>Speed Code:</b>	Single Speed
<b>Duty Rating:</b>	CONT	<b>Motor Standards:</b>	NEMA
<b>Electrically Isolated Bearing:</b>	Not Electrically Isolated	<b>Starting Method:</b>	Direct on line
<b>Feedback Device:</b>	NO FEEDBACK	<b>Thermal Device - Bearing:</b>	None
<b>Front Face Code:</b>	Standard	<b>Thermal Device - Winding:</b>	Do Not Use
<b>Front Shaft Indicator:</b>	None	<b>Vibration Sensor Indicator:</b>	No Vibration Sensor
<b>Heater Indicator:</b>	No Heater	<b>Winding Thermal 1:</b>	Manual Thermal Overload
<b>Insulation Class:</b>	F	<b>Winding Thermal 1 Location:</b>	KO
<b>Inverter Code:</b>	Not Inverter	<b>Winding Thermal 2:</b>	None

<b>Nameplate NP1280L</b>										
<b>CAT.NO.</b>	GSL3509M									
<b>SPEC.</b>	35G630P243G1									
<b>HP</b>	1.5									
<b>VOLTS</b>	208-230									
<b>AMP</b>	6.9-6.4									
<b>RPM</b>	1750									
<b>FRAME</b>	56Z			<b>HZ</b>	60			<b>PH</b>	1	
<b>SER.F.</b>	1.15			<b>CODE</b>	J		<b>DES</b>	L	<b>CL</b>	F
<b>NEMA-NOM-EFF</b>	80			<b>PF</b>	94					
<b>RATING</b>	40C AMB-CONT									
<b>CC</b>							<b>USABLE AT 208V</b>			
<b>DE</b>	6205			<b>ODE</b>	6203					
<b>ENCL</b>	TEFC			<b>SN</b>						

Parts List		
Part Number	Description	Quantity
SA150868	SA 35G630P243G1	1.000 EA
RA139713	RA 35G630P243G1	1.000 EA
OC3025F11	CYL OIL CAP 25MFD/370V	1.000 EA
TPCRT52CA	THERMAL 1PH 1.00 MAN 105C	1.000 EA
EC1161C06SP	ELEC CAP, 161-193 MFD, 250V, 2.06D X 4.	1.000 EA
NS2512A01	INSULATOR, CONDUIT BOX X	1.000 EA
35CB3000A85	SPL CONDUIT BOX 35 W/1" MTO (FOR GASKET	1.000 EA
36GS1000SP	GASKET-CONDUIT BOX, .06 THICK #SV-330 LE	1.000 EA
51XB1016A07	10-16 X 7/16 HXWSSLD SERTYB	2.000 EA
11XW1032G06	10-32 X .38, TAPTITE II, HEX WSHR SLTD U	1.000 EA
HW3001B01	BRASS CUP WASHER, FOR #10 SCREW	1.000 EA
HA6015A11	EARED 1" THERMAL RETAINER (PLATED)	1.000 EA
RM1014A01SP	BUTYL RUB.THRM COV. (MENA)	1.000 EA
51XB1214A10	12-14 X 5/8HX WS SL SR TYBX	2.000 EA
35EP3122F14	F00 W/.125NPT FACE DRNS	1.000 EA
HA4054	SHORT T-DRAIN FITTING, .125" N.P.T.	2.000 EA
51XW0832A07	8-32 X .44, TAPTITE II, HEX WSHR SLTD SE	2.000 EA
35CB3801	CAPACITOR COVER, CAST	1.000 EA
HA7010	CAPACITOR RETENTION CLAMP	1.000 EA
34GS3002	GASKET, CAPACITOR BOX	1.000 EA
NS2501A02	INSULATOR, CAPACITOR BOX	1.000 EA
51XB1016A08	10-16X 1/2HXWSSLD SERTYB	2.000 EA
HW5100A03	WAVY WASHER (W1543-017)	1.000 EA
35EP3123D00	MASTER DE,205 BRG,.998 SH,#26 DRN,FH MTG	1.000 EA

Parts List (continued)		
Part Number	Description	Quantity
XY1032A02	10-32 HEX NUT DIRECTIONAL SERRATION	4.000 EA
35FN2000A04	EXFN, ALUM, 5.75 OD, .938 ID	1.000 EA
80XN2520A06	1/4-20 X 3/8 SET SCREW	1.000 EA
35FH4005A23	IEC FH NO GR SR W/SPL CUTOUT, W/ PRIMER	1.000 EA
51XW1032A06	10-32 X .38, TAPTITE II, HEX WSHR SLTD S	3.000 EA
WD4100A01	DP-875 HEYCO PLUG OR 62MP0875 MICRO PLAS	3.000 EA
35CB4514GX	CONDUIT BOX LID KIT	1.000 EA
51XW0832A07	8-32 X .44, TAPTITE II, HEX WSHR SLTD SE	4.000 EA
HW2501D08	KEY, 3/16 SQ X .875 AUTO	1.000 EA
HA7000A01	KEY RETAINER 7/8" DIA SHAFT	1.000 EA
WD1000A15	3-520132-2 AMP FLAG (4M/RL NON-CANC/NON-	4.000 EA
MJ1000A02	GREASE, MOBIL POLYREX EM - 124047	0.050 LB
MG1025C02	WILKOFASG, 787.105, TAN	0.017 GA
LB1087	LABEL,MANUAL RESET (ROLL LABEL)	1.000 EA
85XU0407S04	4X1/4 U DRIVE PIN STAINLESS	2.000 EA
HA3100A18	THRUBOLT 10-32 X 9.250	4.000 EA
NS2500A02	INSULATOR, MAN THER PROT	1.000 EA
34GS5003	FOAM SLEEVE, ID = 2 1/16" X 3 3/8"	2.000 EA
SP5181A01	MODEL 35 LC TORQ STAT SWITCH LEAD ASSY	1.000 EA
LB1119N	WARNING LABEL	1.000 EA
LC0370	1PH, SV, REV, THERMAL 7LD, 1/2 LINE ACCE	1.000 EA
NP1280L	ALUM FARM DUTY UL CSA CC THERMAL	1.000 EA
35PA1066	PKG GRP, PRINT PK1008A06	1.000 EA
MN416A01	TAG-INSTAL-MAINT no wire (1200/bx) 3/19	1.000 EA

PE-0000001	ZRTG PE ASSEMBLY	1.000 EA
FE-0000001	ZRTG FE ASSEMBLY	1.000 EA

**AC Induction Motor Performance Data**

Record # 23711 - Typical performance - not guaranteed values

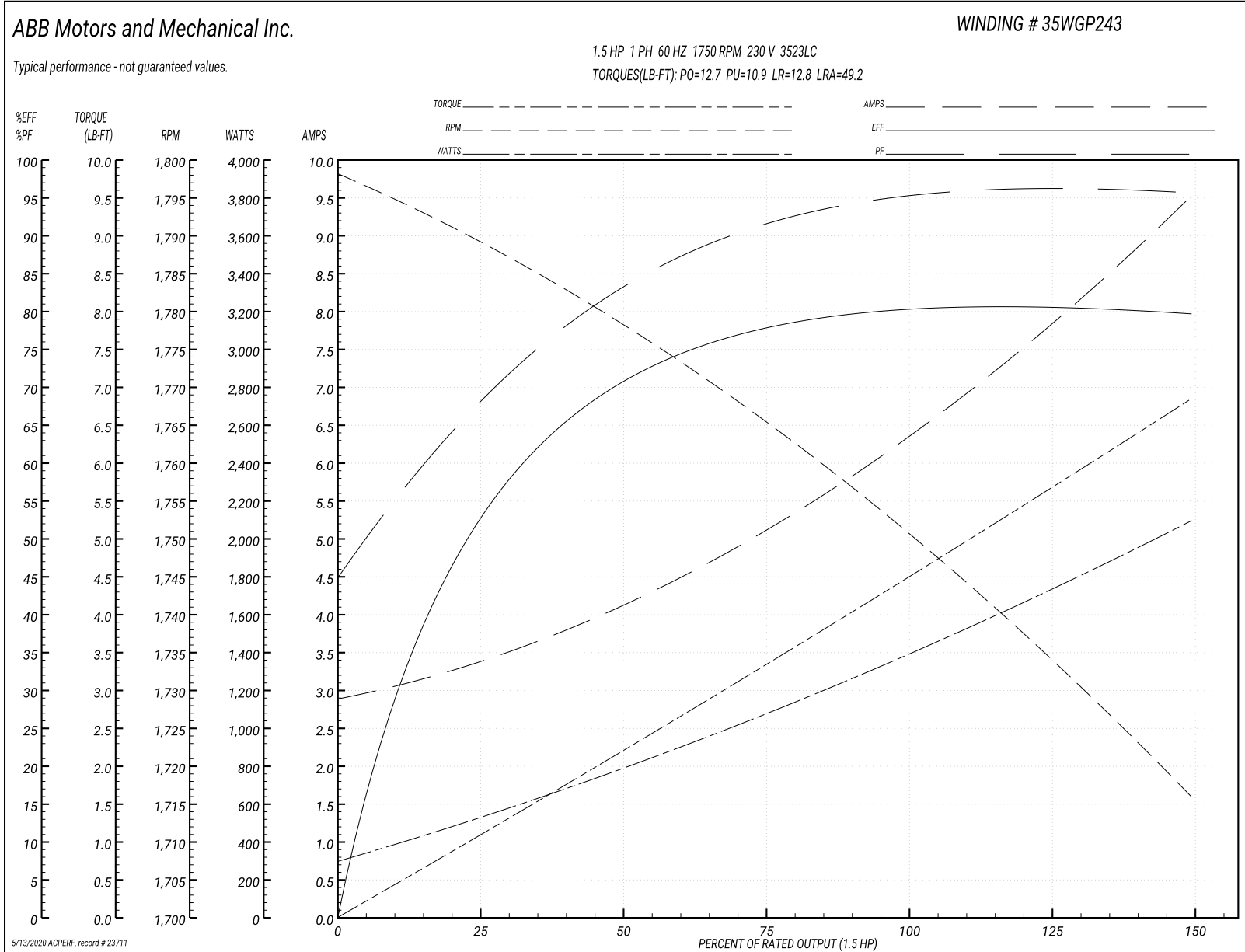
<b>Winding:</b> 35WGP243-R001	<b>Type:</b> 3523LC	<b>Enclosure:</b> TEFC
-------------------------------	---------------------	------------------------

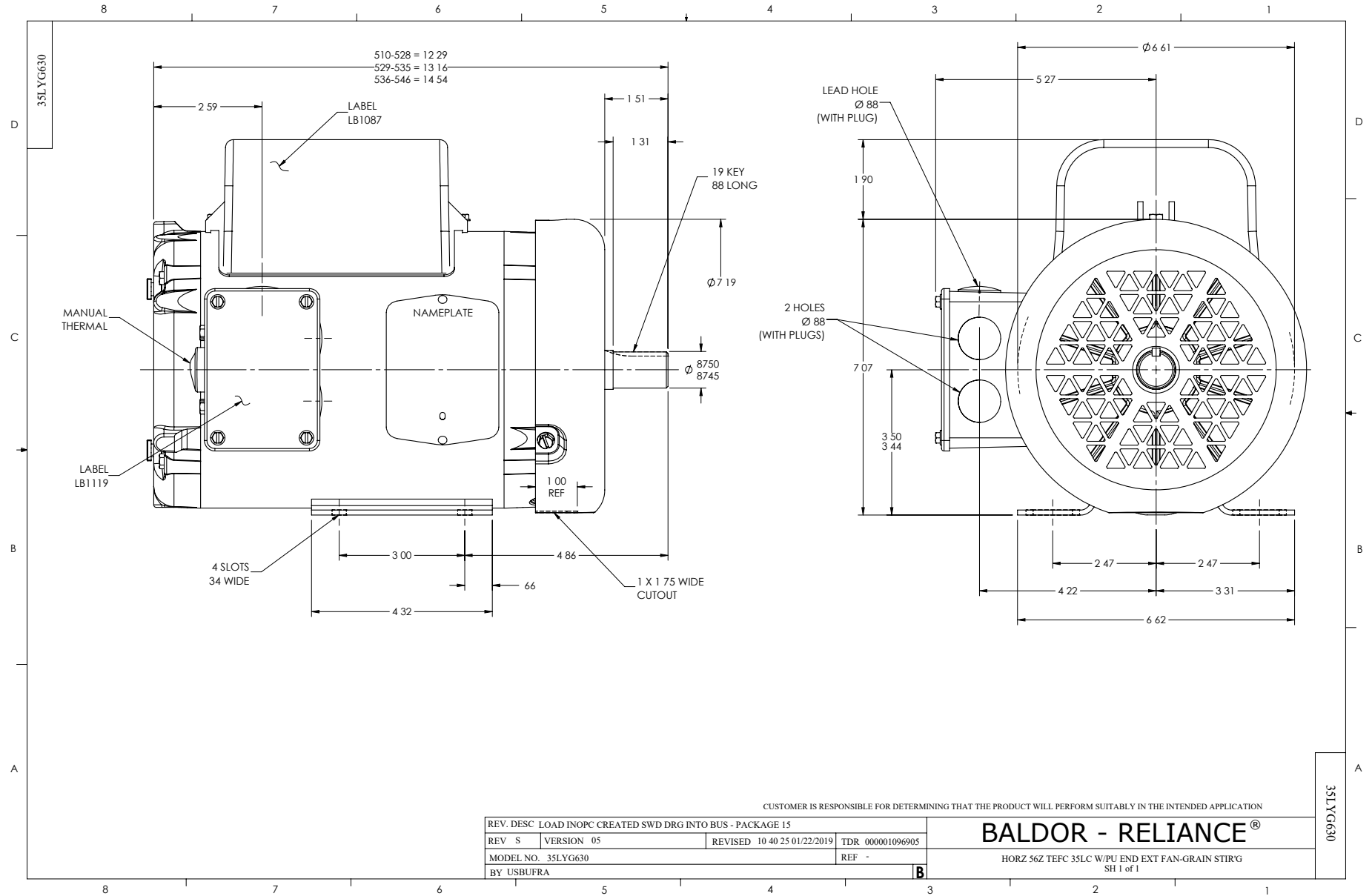
Nameplate Data				230 V, 60 Hz: Single Voltage Motor	
Rated Output (HP)	1.5			Full Load Torque	4.52 LB-FT
Volts	230			Start Configuration	direct on line
Full Load Amps	6.4			Breakdown Torque	12.7 LB-FT
R.P.M.	1750			Pull-up Torque	10.9 LB-FT
Hz	60	Phase	1	Locked-rotor Torque	12.8 LB-FT
NEMA Design Code	L	KVA Code	J	Starting Current	49.2 A
Service Factor (S.F.)	1.15			No-load Current	2.93 A
NEMA Nom. Eff.	80	Power Factor	94	Line-line Res. @ 25°C	2.06 Ω A Ph 3.74 Ω B Ph
Rating - Duty	40C AMB-CONT			Temp. Rise @ Rated Load	73°C
S.F. Amps				Temp. Rise @ S.F. Load	87°C

Load Characteristics 230 V, 60 Hz, 1.5 HP

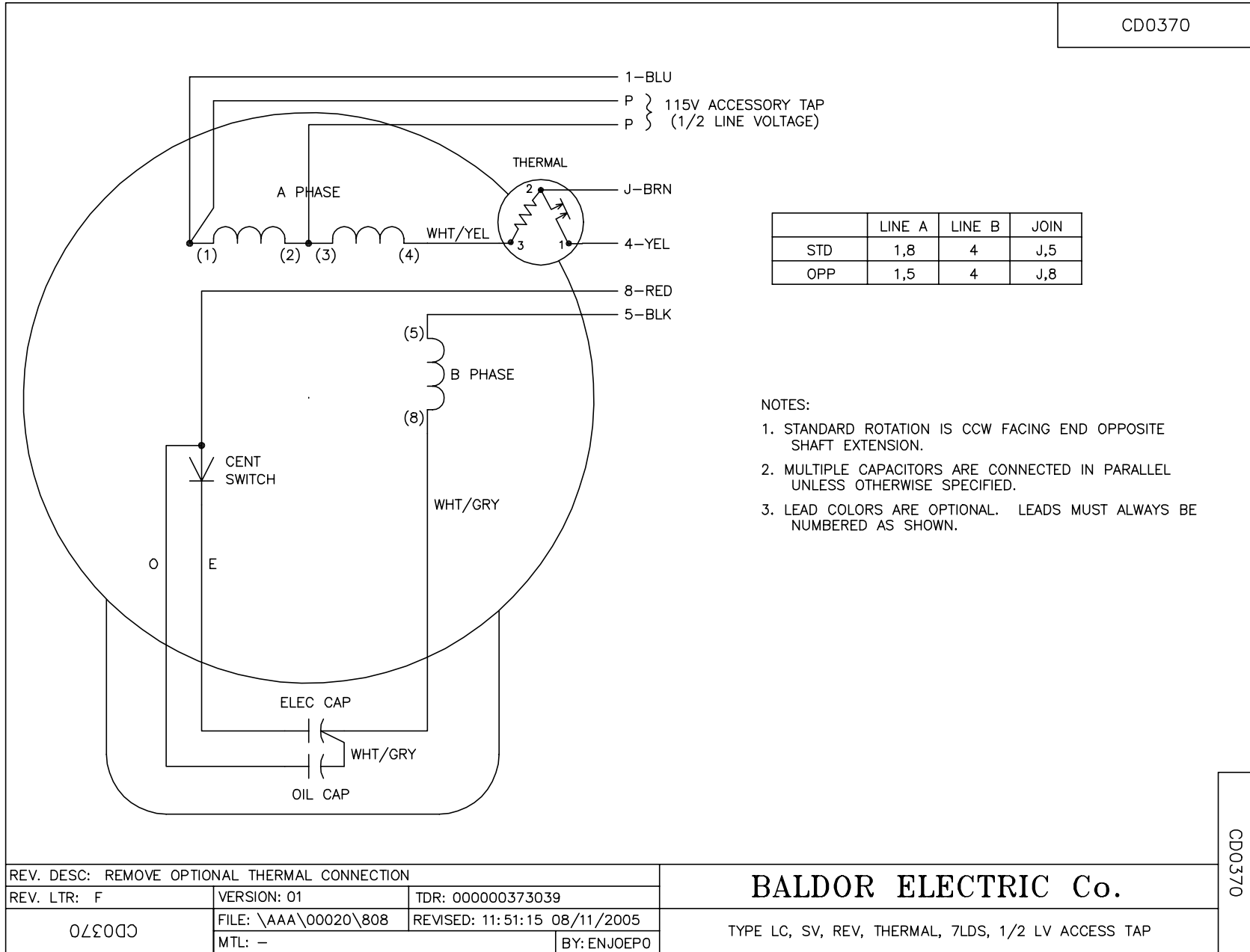
% of Rated Load	25	50	75	100	125	150	S.F.
Power Factor	69	85	91	94	96	96	95
Efficiency	50.9	70.3	77.6	80.7	81	79.4	80.9
Speed	1789	1777	1766	1751	1735	1715	1741
Line amperes	3.32	4.06	5.13	6.44	7.84	9.51	7.28

Performance Graph at 230V, 60Hz, 1.5HP Typical performance - Not guaranteed values





CD0370



CD0370

REV. DESC: REMOVE OPTIONAL THERMAL CONNECTION		
REV. LTR: F	VERSION: 01	TDR: 000000373039
0ZΩ0D0	FILE: \AAA\00020\808	REVISED: 11:51:15 08/11/2005
	MTL: -	BY: ENJOEPO

**BALDOR ELECTRIC Co.**

TYPE LC, SV, REV, THERMAL, 7LDS, 1/2 LV ACCESS TAP